

Vol. 30, No. 25

PADULA ASKS COMMISSIONERS TIGHT BUDGETS

Mayor Isadore J. Padula said today he will request committee members to submit departmental budgets by the end of the year, and is urging them to keep down economies.

"No director will undertake any additional projects or expenditures of emergency," the Mayor said.

In a letter to each commissioner, the Mayor said: "As you know, the 1955 Budget for Belleville must be ready to present to the citizens very soon."

"To this end, each department Director is requested to present a budget by January 10, to the Director of Revenue and Finance not later than December 30, 1954. The initial budgets must be studied by the Board in session with the Finance Director, Treasurer and Auditor, before the composite of the five individual budgets can be reviewed by the Auditor and presented to the citizens and State Officials."

Due to the trend of events before and after the election of the present Board of Commissioners, I am sure that each member is acutely aware of the impact the 1955 budget will have on the people and will, therefore, strive to make it a budget of economy, to earth concept as to what is essential to good services in the city, and to provide for the future income, to allow a sound management of surplus funds for real emergencies.

Therefore, believing it is your sincere aim to work out a sound economical budget, I am sure you will be in ratio with true services in all facets of government, and anticipating your budget will be above stated, I am,

Respectfully yours,

ISADORE J. PADULA

TIETJEN HAS YULE IN HOME, AFTER ALL

John Tietjen, 37, spent Christmas with his family in his home at 194 Division Avenue, after a night of confinement with a \$80 fine.

Mr. Tietjen, who was arrested last week, after being found guilty on two charges of driving without a license, was taken to school, Tietjen chose the alternative, spending 14 days in jail.

However he apparently changed his mind after being returned to his home, and decided to pay the fine and spend Christmas home.

Complaints were signed by R. Wesley Schneegas, trustee of the Rosary Society, which kept his children from attending school on Monday, January 4 to December 22.

A fourth child, Urvula, 14, was in the high school, has missed only one day since September, Abromson said.

Rosary Society Social

St. Peter's Rosary Confraternity will meet Monday at 8:30 in the St. Peter's Church. The social chairman of the social hour, will be assisted by Mrs. Margaret J. Sullivan, Mrs. Grace E. Williams, Skidmore, Mrs. Myron Baron, Mrs. Edward Costenbaker, Mrs. Mary E. Grogan, Mrs. Richard J. O'Connell, and Mrs. Thomas Gallagher.

Elections, Indictments Highlighted News in 1954

Tully's Defeat, New A & P Super Market, Million Dollar Grant, Swimming Pool, Made Top News Here

The resounding defeat of the Charter Study proposal . . . the indictments of several town officials by a Grand Jury . . . the Prudential's occupying its new quarters here . . . the \$1,000,000 dollar grant to the Clara Maass Hospital . . . the election of Padula, King, Sullivan, Smith and

Hyde and the defeat of Mayor James Tully . . . the new A & P Super Market . . . these were some of the highlights of 1954 in Belleville.

Here is a round-up of the spot news in town the past year as Belleville rings out the old and rings in the new.

JANUARY

Wallace and Tiernan Company, merged with Novelty-Agency Corporation to become Wallace and Tiernan, Inc. . . . Young Men in Government adopted a constitution and elected officers.

Charles Young named vice-president . . . at least \$102,000 reported to the Board of Education by the Charter Study to appear on the May ballot.

Mayor Tully appoints Dr. Palmer to study a five-year term on the Board of Education, succeeding Raymond McCann . . . Town's record of \$1,489,574 over \$3 . . .

Town's record of \$1,489,574 over \$3 . . . \$200,000 "excessive" and announcing he will appoint a citizens committee to study the Charter.

Rev. Thomas B. Ellis of Grace Baptist Church preaches his final sermon to the congregation before leaving to assume pastordship of the First Baptist Church in Lonsdale, Md., on January 10.

By the Commission puts the Charter Study question up for the May

Will Burn Christmas Trees At Twelfthnight Ceremony

The third annual Twelfthnight Ceremony, in which Christmas trees are burned, will be held in Municipal Stadium Tuesday, January 6 at 8 p. m., the recreation department said today.

In case of bad weather, the ceremony will be held the next night.

The department asked residents to place their Christmas trees on the curb in front of the home Monday, January 5.

The trees will be collected by the street department, which last year collected more than 5,000 trees for burning.

The program begins down the curtain on the Christmas season here. It includes a religious message, burning of the trees and singing of carols.

The community singing will be led by Andrew Varigan who will be the Auditor and presiding officer.

The department said it is judging Christmas tree displays and award prizes after announcing winners.

THIEF CUTS GLASS, STEALS JEWELRY FROM FREDERICKS

Twenty watches, 12 rings, two necklaces and a bracelet, valued at \$1,500, were stolen from the display window of Frederick's Jewelry Store, 260 Madison Avenue, police reported last night.

The theft took place early Sunday morning. Police were informed by an anonymous phone caller.

The store front was boarded up yesterday afternoon.

Detectives Frank Hight and Irving Hilly said the thief appeared to be in his late 20s or early 30s. He was wearing a dark suit and a light-colored shirt.

A number of diamond, onyx and ruby rings were found among the stolen goods. The thief was seen running away from the store.

Mrs. Rose Fredericks estimated that a diamond wedding and engagement set, two diamond, two rhinestone necklaces and three pairs of men's gold cuff links were among the jewelry stolen.

Channukah Rites Tonight At Hadassah Meeting

Channukah candles will be kindled in the Hadassah Chapter of Hadassah, 260 Madison Avenue, at 8:30 at Temple B'Nai B'rith in Nutley.

Mrs. Rose Fredericks, president of the chapter, will preside. The program will include the lighting of the candles, singing and a meal.

Mrs. Peter D. Sibilla of 67 Bell Street told police that Fritz, her four-year-old Dachshund, was missing from her home.

A police car was damaged slightly in an accident at William and Greenwich Streets.

Mrs. Joseph Moreno of 51 Van Kester Place told police someone entered his home on Sunday night and cut wires on her decorations in front of her home.

Commissioner James E. Hyde said he will see to it that the skating rink on Division Avenue is flooded any time of the year.

These communities enjoy a temperate climate to 10 degrees below zero.

Residents can tell if there is snow in the air by the sound of the wind. The sound of the wind is a low area and the rink is protected from the wind which accounts for its popularity.

These communities enjoy a temperate climate to 10 degrees below zero.

Residents can tell if there is snow in the air by the sound of the wind. The sound of the wind is a low area and the rink is protected from the wind which accounts for its popularity.

These communities enjoy a temperate climate to 10 degrees below zero.

Residents can tell if there is snow in the air by the sound of the wind. The sound of the wind is a low area and the rink is protected from the wind which accounts for its popularity.

These communities enjoy a temperate climate to 10 degrees below zero.

Residents can tell if there is snow in the air by the sound of the wind. The sound of the wind is a low area and the rink is protected from the wind which accounts for its popularity.

These communities enjoy a temperate climate to 10 degrees below zero.

Residents can tell if there is snow in the air by the sound of the wind. The sound of the wind is a low area and the rink is protected from the wind which accounts for its popularity.

These communities enjoy a temperate climate to 10 degrees below zero.

POSTAL TEST HERE 'SUCCESS' SAYS JOHN KANT

A 10-day postal test in which the Post Office handled its own mailing procedure for the first time, was termed a success, this week by Postmaster John Kant.

"The test came out fine — it was very good," Kant said yesterday. "Adding that the office handled a half million pieces of mail including 200,000 pieces of local mail."

Formerly, all mail picked up from boxes was taken to Newark for sorting and delivery.

Under the experiment, letters for town addresses mailed here in the morning were delivered in the afternoon.

Kant said that fifty-three carriers and 12 clerks did the job for the postoffice this year, compared to 40 carriers last year.

He said he doubted whether the experiment would be continued full time, but added that a similar test probably would be made next year.

"We moved more mail than before, and faster," Kant said.

The mail, proposed for the special test period on December 15, 16th incoming and outgoing mail, was collected by the post office by trucks, with postal workers being out of the mail.

The mail, proposed for the special test period on December 15, 16th incoming and outgoing mail, was collected by the post office by trucks, with postal workers being out of the mail.

The mail, proposed for the special test period on December 15, 16th incoming and outgoing mail, was collected by the post office by trucks, with postal workers being out of the mail.

The mail, proposed for the special test period on December 15, 16th incoming and outgoing mail, was collected by the post office by trucks, with postal workers being out of the mail.

The mail, proposed for the special test period on December 15, 16th incoming and outgoing mail, was collected by the post office by trucks, with postal workers being out of the mail.

The mail, proposed for the special test period on December 15, 16th incoming and outgoing mail, was collected by the post office by trucks, with postal workers being out of the mail.

The mail, proposed for the special test period on December 15, 16th incoming and outgoing mail, was collected by the post office by trucks, with postal workers being out of the mail.

The mail, proposed for the special test period on December 15, 16th incoming and outgoing mail, was collected by the post office by trucks, with postal workers being out of the mail.

The mail, proposed for the special test period on December 15, 16th incoming and outgoing mail, was collected by the post office by trucks, with postal workers being out of the mail.

The mail, proposed for the special test period on December 15, 16th incoming and outgoing mail, was collected by the post office by trucks, with postal workers being out of the mail.

The mail, proposed for the special test period on December 15, 16th incoming and outgoing mail, was collected by the post office by trucks, with postal workers being out of the mail.

The mail, proposed for the special test period on December 15, 16th incoming and outgoing mail, was collected by the post office by trucks, with postal workers being out of the mail.

The mail, proposed for the special test period on December 15, 16th incoming and outgoing mail, was collected by the post office by trucks, with postal workers being out of the mail.

The mail, proposed for the special test period on December 15, 16th incoming and outgoing mail, was collected by the post office by trucks, with postal workers being out of the mail.

The mail, proposed for the special test period on December 15, 16th incoming and outgoing mail, was collected by the post office by trucks, with postal workers being out of the mail.

The mail, proposed for the special test period on December 15, 16th incoming and outgoing mail, was collected by the post office by trucks, with postal workers being out of the mail.

The mail, proposed for the special test period on December 15, 16th incoming and outgoing mail, was collected by the post office by trucks, with postal workers being out of the mail.

The mail, proposed for the special test period on December 15, 16th incoming and outgoing mail, was collected by the post office by trucks, with postal workers being out of the mail.

The mail, proposed for the special test period on December 15, 16th incoming and outgoing mail, was collected by the post office by trucks, with postal workers being out of the mail.

The mail, proposed for the special test period on December 15, 16th incoming and outgoing mail, was collected by the post office by trucks, with postal workers being out of the mail.

The mail, proposed for the special test period on December 15, 16th incoming and outgoing mail, was collected by the post office by trucks, with postal workers being out of the mail.

The mail, proposed for the special test period on December 15, 16th incoming and outgoing mail, was collected by the post office by trucks, with postal workers being out of the mail.

The mail, proposed for the special test period on December 15, 16th incoming and outgoing mail, was collected by the post office by trucks, with postal workers being out of the mail.

The mail, proposed for the special test period on December 15, 16th incoming and outgoing mail, was collected by the post office by trucks, with postal workers being out of the mail.

The mail, proposed for the special test period on December 15, 16th incoming and outgoing mail, was collected by the post office by trucks, with postal workers being out of the mail.

The mail, proposed for the special test period on December 15, 16th incoming and outgoing mail, was collected by the post office by trucks, with postal workers being out of the mail.

FUNERAL HOME PETITION TO BE GIVEN TONIGHT

The controversy over the establishment of a funeral home at Holmes and New Street is expected to be renewed tonight at the Commission meeting.

A petition for the establishment of the funeral home there will be presented, it was learned. Some residents at the corner are opposing the establishment.

The funeral home would be placed in a house owned by George F. Kiernan. Kiernan presently has a funeral home at 101 Union Avenue.

A resolution to decorticate the house at 101 Union Avenue is expected to be presented at the next meeting. Representatives of groups for and against decorticate are expected to be present.

The commission also will hold public hearings on an ordinance which would limit regulations on construction and use of oil burning equipment and storage of oil fuel.

It will hold a public hearing on ordinances regulating and limiting height and bulk of buildings and regulating erection, construction, alteration, demolition and removal of buildings.

Henry W. Zadikoff will be installed president of Congregation Ahavas Achim during special services to be conducted January 6 at the Synagogue.

Other officers include Louis Lempert, first vice-president; Dr. Seymour P. Fischer, second vice-president; Seymour P. Fischer, secretary; Max Kraftchick, financial secretary; Bernard Holzman, treasurer and Sam Promislow, corresponding secretary.

Dr. Theodore Friedman, of Congregation B'nai B'rith of the Orthodox and the synagogue choir, under the direction of Miss Doris Cohen, will participate.

Dr. Theodore Friedman, of Congregation B'nai B'rith of the Orthodox and the synagogue choir, under the direction of Miss Doris Cohen, will participate.

Dr. Theodore Friedman, of Congregation B'nai B'rith of the Orthodox and the synagogue choir, under the direction of Miss Doris Cohen, will participate.

Dr. Theodore Friedman, of Congregation B'nai B'rith of the Orthodox and the synagogue choir, under the direction of Miss Doris Cohen, will participate.

Dr. Theodore Friedman, of Congregation B'nai B'rith of the Orthodox and the synagogue choir, under the direction of Miss Doris Cohen, will participate.

Dr. Theodore Friedman, of Congregation B'nai B'rith of the Orthodox and the synagogue choir, under the direction of Miss Doris Cohen, will participate.

Dr. Theodore Friedman, of Congregation B'nai B'rith of the Orthodox and the synagogue choir, under the direction of Miss Doris Cohen, will participate.

Dr. Theodore Friedman, of Congregation B'nai B'rith of the Orthodox and the synagogue choir, under the direction of Miss Doris Cohen, will participate.

Dr. Theodore Friedman, of Congregation B'nai B'rith of the Orthodox and the synagogue choir, under the direction of Miss Doris Cohen, will participate.

Dr. Theodore Friedman, of Congregation B'nai B'rith of the Orthodox and the synagogue choir, under the direction of Miss Doris Cohen, will participate.

Dr. Theodore Friedman, of Congregation B'nai B'rith of the Orthodox and the synagogue choir, under the direction of Miss Doris Cohen, will participate.

Dr. Theodore Friedman, of Congregation B'nai B'rith of the Orthodox and the synagogue choir, under the direction of Miss Doris Cohen, will participate.

Dr. Theodore Friedman, of Congregation B'nai B'rith of the Orthodox and the synagogue choir, under the direction of Miss Doris Cohen, will participate.

Dr. Theodore Friedman, of Congregation B'nai B'rith of the Orthodox and the synagogue choir, under the direction of Miss Doris Cohen, will participate.

Dr. Theodore Friedman, of Congregation B'nai B'rith of the Orthodox and the synagogue choir, under the direction of Miss Doris Cohen, will participate.

Dr. Theodore Friedman, of Congregation B'nai B'rith of the Orthodox and the synagogue choir, under the direction of Miss Doris Cohen, will participate.

Dr. Theodore Friedman, of Congregation B'nai B'rith of the Orthodox and the synagogue choir, under the direction of Miss Doris Cohen, will participate.

Dr. Theodore Friedman, of Congregation B'nai B'rith of the Orthodox and the synagogue choir, under the direction of Miss Doris Cohen, will participate.

Dr. Theodore Friedman, of Congregation B'nai B'rith of the Orthodox and the synagogue choir, under the direction of Miss Doris Cohen, will participate.

Dr. Theodore Friedman, of Congregation B'nai B'rith of the Orthodox and the synagogue choir, under the direction of Miss Doris Cohen, will participate.

Dr. Theodore Friedman, of Congregation B'nai B'rith of the Orthodox and the synagogue choir, under the direction of Miss Doris Cohen, will participate.

Dr. Theodore Friedman, of Congregation B'nai B'rith of the Orthodox and the synagogue choir, under the direction of Miss Doris Cohen, will participate.

Dr. Theodore Friedman, of Congregation B'nai B'rith of the Orthodox and the synagogue choir, under the direction of Miss Doris Cohen, will participate.

Dr. Theodore Friedman, of Congregation B'nai B'rith of the Orthodox and the synagogue choir, under the direction of Miss Doris Cohen, will participate.

Dr. Theodore Friedman, of Congregation B'nai B'rith of the Orthodox and the synagogue choir, under the direction of Miss Doris Cohen, will participate.

Conference Sifts Seven Candidates

Intends To Pick Man On Merit Next Week To Run For Board

The Belleville Conference, a cross-sectional town group organized to enter a candidate for the board of education's first member-election February 8, has picked seven men now being screened on qualifications.

The names of the seven and their abilities will be presented to the group at its next meeting, next Wednesday, Jan. 5, and an election will be held to produce the Conference candidate.

The seven were proposed at a Conference meeting last week, in which an information committee was set up and a publicity chairman elected.

Mrs. George M. Cooper, publicity chairman, said there were 14 groups represented at the meeting, including civic and service groups, and Parent-Teacher Associations.

Mrs. Cooper said the Conference meeting to make public the names of the proposed candidates, and the four members of the information committee, are presenting the proposed candidates.

Mrs. Cooper said delegates, or alternate delegates, and representatives comprising the conference, will elect the Conference candidate to the board of education at its meeting next Wednesday.

The Belleville Conference was formed here last week, through the efforts of the Belleville Civic Association, a civic group. The Association says it hopes to keep the board of education out of politics and that Conference endorsement of a candidate will be tantamount to election, since it will name its candidate through democratic process.

NEW DEFENSE DIRECTOR is Nicholas Maunelle of 122 Garden Avenue, who was appointed to that post by Mayor Isadore Padula.

NEW DEFENSE DIRECTOR is Nicholas Maunelle of 122 Garden Avenue, who was appointed to that post by Mayor Isadore Padula.

NEW DEFENSE DIRECTOR is Nicholas Maunelle of 122 Garden Avenue, who was appointed to that post by Mayor Isadore Padula.

NEW DEFENSE DIRECTOR is Nicholas Maunelle of 122 Garden Avenue, who was appointed to that post by Mayor Isadore Padula.

NEW DEFENSE DIRECTOR is Nicholas Maunelle of 122 Garden Avenue, who was appointed to that post by Mayor Isadore Padula.

NEW DEFENSE DIRECTOR is Nicholas Maunelle of 122 Garden Avenue, who was appointed to that post by Mayor Isadore Padula.

NEW DEFENSE DIRECTOR is Nicholas Maunelle of 122 Garden Avenue, who was appointed to that post by Mayor Isadore Padula.

NEW DEFENSE DIRECTOR is Nicholas Maunelle of 122 Garden Avenue, who was appointed to that post by Mayor Isadore Padula.

NEW DEFENSE DIRECTOR is Nicholas Maunelle of 122 Garden Avenue, who was appointed to that post by Mayor Isadore Padula.

NEW DEFENSE DIRECTOR is Nicholas Maunelle of 122 Garden Avenue, who was appointed to that post by Mayor Isadore Padula.

NEW DEFENSE DIRECTOR is Nicholas Maunelle of 122 Garden Avenue, who was appointed to that post by Mayor Isadore Padula.

NEW DEFENSE DIRECTOR is Nicholas Maunelle of 122 Garden Avenue, who was appointed to that post by Mayor Isadore Padula.

NEW DEFENSE DIRECTOR is Nicholas Maunelle of 122 Garden Avenue, who was appointed to that post by Mayor Isadore Padula.

NEW DEFENSE DIRECTOR is Nicholas Maunelle of 122 Garden Avenue, who was appointed to that post by Mayor Isadore Padula.

NEW DEFENSE DIRECTOR is Nicholas Maunelle of 122 Garden Avenue, who was appointed to that post by Mayor Isadore Padula.

NEW DEFENSE DIRECTOR is Nicholas Maunelle of 122 Garden Avenue, who was appointed to that post by Mayor Isadore Padula.

NEW DEFENSE DIRECTOR is Nicholas Maunelle of 122 Garden Avenue, who was appointed to that post by Mayor Isadore Padula.

NEW DEFENSE DIRECTOR is Nicholas Maunelle of 122 Garden Avenue, who was appointed to that post by Mayor Isadore Padula.

NEW DEFENSE DIRECTOR is Nicholas Maunelle of 122 Garden Avenue, who was appointed to that post by Mayor Isadore Padula.

NEW DEFENSE DIRECTOR is Nicholas Maunelle of 122 Garden Avenue, who was appointed to that post by Mayor Isadore Padula.

NEW DEFENSE DIRECTOR is Nicholas Maunelle of 122 Garden Avenue, who was appointed to that post by Mayor Isadore Padula.

NEW DEFENSE DIRECTOR is Nicholas Maunelle of 122 Garden Avenue, who was appointed to that post by Mayor Isadore Padula.

NEW DEFENSE DIRECTOR is Nicholas Maunelle of 122 Garden Avenue, who was appointed to that post by Mayor Isadore Padula.

NEW DEFENSE DIRECTOR is Nicholas Maunelle of 122 Garden Avenue, who was appointed to that post by Mayor Isadore Padula.

NEW DEFENSE DIRECTOR is Nicholas Maunelle of 122 Garden Avenue, who was appointed to that post by Mayor Isadore Padula.

Fidelity

(Continued On Page Two)
 tary and high school education in Poughkeepsie. On graduation from Eastman College, in Poughkeepsie, where he majored in business and banking, Mr. Duke in 1914 joined the credit department of Irving National Bank, now the Irving Trust Company, of New York City.

In 1918 he came to Newark to organize a credit department of a bank which was consolidated with Fidelity Union Trust Company in 1920. His banking career was interrupted by military service as an infantry lieutenant in World War I.

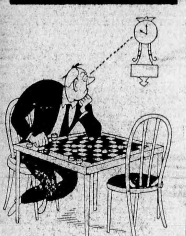
On his return to Fidelity Union, he became credit manager and then assistant treasurer. Advancing through the posts of Treasurer and Assistant Vice-President, Mr. Duke was elected a vice-president in 1935. In 1941, he was designated Senior Vice-President and elected a director of the bank.

Mr. Duke and his wife, the former Florence E. Lee, of Jersey City, reside at 1 Cambridge Drive, Short Hills. There are two sons, Roy F. Duke, Jr., now assistant treasurer of the Colonial Life Insurance Company, and Alan Duke, secretary-treasurer, of the Sanitary Supply Company, at Avon.

Custom Upholstering
 Slip Covers
 Draperies
 Furniture Repairing
KUFRIN'S UPHOLSTERING SHOP
 547 Washington Avenue
 PL 9-7620

Watches — Clocks — Jewelry
 Watch and Clock Repairing
W. T. HART
 127-A Washington St.
 Newark 2, N. J.
 Market 3-6424

PAINT YOUR
 AUTOMOBILE
\$49.50
 ROSS MOTOR SALES

WHERE'S ELMER?

 at Franklin Casino

where his appetite is never "checkmated". Here he's always sure of something particularly tempting!
Franklin Casino
 338 Franklin Ave.
 BAR-RESTAURANT

1955 NEW CAR
 AUTO FINANCE
3 1/2% PLAN
 Phone HUmboldt 5-3623
 For NEW Rate Chart.
Franklin Washington
 TRUST COMPANY
 5 Convenient Offices in Newark
 A GOOD PLACE TO BANK



OPEN LATE
Wed. & Thurs.
til 9 P M
FRIDAY — NEW YEAR'S EVE TIL 6 P.M.

Ample Free Parking

NEW YEAR'S PARTY SUGGESTIONS

- ☐ Chunk-F-Nut Peanuts 4 oz. pkg. 21c
- ☐ Chunk-F-Nut Nuts 4 oz. can 39c
- ☐ Planter's Peanuts 8 oz. can 34c
- ☐ Rieu Cheese Crackers Flavor 7-oz. pkg. 29c
- ☐ Hygrade Potato Chips 7-oz. pkg. 29c
- ☐ Filler's Corn Chips 4 1/2 oz. can 19c
- ☐ Beer Pretzels Anderson's 7 oz. pkg. 25c
- ☐ Coca-Cola Plus Deposit 6 oz. bot. 37c
- ☐ Midtown Club BEVERAGE 2 1/2 oz. bot. 25c
- ☐ Abbott's Ice Cream Plus Deposit 1 1/2 gal. pkg. 99c
- ☐ Mother Goose Straws pkg. of 100 10c
- ☐ Glass Straws pkg. of 50 10c
- ☐ Paper Plates Aristocrat Colored 2 pkgs. of 8 25c
- ☐ Filler's Cheese Trix 3 oz. jar 29c
- ☐ Filler's Bake 'N Krip 3 oz. jar 29c
- ☐ Cocktail Mixes Holland House pt. bot. 69c
- ☐ Anchovy Paste 2 oz. can 20c
- ☐ Chunk F-Nut Salted Cashews 4 oz. can 39c
- ☐ Hygrade Butter Pretzels 12 oz. box 29c
- ☐ Canada Dry Ginger Ale or Club Soda Plus Deposit 2 bot. 45c

SEE HOW YOU SAVE
 WITH LOW PRICES...
 READY-TO-EAT

DUBUQUE Canned PICNICS

4 1/2 lb. can **2.99**
 DELICIOUS, BONELESS & SKIN-LESS PORK SHOULDER

MAY WE SUGGEST
 FOR YOUR NEW YEAR'S BREAKFAST...

FOOD FAIR EGGS
 LARGE WHITE GRADE "A" doz. 55c
 Mayfair LARGE MIXED EGGS doz. 49c
 Sliced Bacon ENGLISHMAN lb. 59c
 Lady Fair ENRICHED WHITE Bread 2 lb. 29c

IN OUR BAKERY DEPT. . .

LADY FAIR — Reg. 1.50
Layer Cakes Asst'd 3 lb. 99c
 LADY FAIR — Plain, Marble or Iced
Pound Cake Rings ea. 99c
 LADY FAIR ANGEL FOOD CAKE . . 33c

LIBBY'S
Tomato Juice 4 18 oz. cans **49c**
Orange Drink or Party Punch 2 46 oz. cans **47c**
Banquet Chicken 5 oz. can **25c**
Fre-Mar Tuna 2 6 1/2 oz. cans **49c**
Pizza Pie Mix 12 1/2 oz. pkg. **29c**
Red Cross Napkins pkgs. **9c**
Kosher Dill Pickles qt. jar **27c**
Ritz Crackers lb. pkg. **32c**
 Osage Pimientos Sliced 2 oz. jar 11c
 Red Breast Fancy Cakes Salmon 7 1/2 oz. can 39c
 Anchovies Flat or Rolled 2 2 oz. can 23c
 Fre-Mar Mayonnaise 16 oz. jar 31c
 Coniadtina Ex. Large Ripe Olives 4 1/2 oz. can 29c
 Eagle Party Picks Plastic pkg. of 40 39c
 Cut-Rite Wax Paper 125 ft. roll 25c
 Joy Liquid Detergent 7 oz. bot. 30c
 Fyne-Taste Olives Plain Queen 7 1/2 oz. jar 29c
 Lady Fair Choc. Cav. Thin Mints 10 oz. pkg. 39c
 Lady Fair Mint Pillows 1 lb. pkg. 27c
 Kasco Dog Ration 2 lb. pkg. 33c
 O-Cel-O Sponges 1/2 Price Sale comb. of 2 med. 31c
 O-Cel-O Sponges 1/2 Price Sale comb. of 2 large 45c
 Giroux Grenadine 8 oz. bot. 29c
 Cheer giant pkg. 72c

Food Fair Says It With
LOW PRICES EVERY DAY!
 Save on Food Fair's PSG* Top Quality Meats!...

PSG* TOP QUALITY

FRESH HAMS
 Shank lb. 45c Butt lb. 55c **WHOLE lb. 47c**

Farmer Gray — Top Grade A — *Eviscerated

TURKEYS
 18 lbs. & Over lb. **43c**
 11 to 14 lbs. lb. **55c**

*Head, Feet, Waste Completely Removed Before Weighing Under U. S. Government Supervision.

FRESH SALADS FOR YOUR SPECIAL PARTY

Kitchen Fresh Potato Salad lb. cont. **33c**
Kitchen Fresh Cole Slaw lb. cont. **33c**

All Kitchen Fresh Salads Prepared Fresh Daily in Our Sanitary Kitchens
 We carry a large variety of Boiled Ham, Salamis and Liverwurst for your New Year's party needs.

SEAFOOD DEPT. FEATURES

SELECTED **SHRIMP** MEDIUM lb. **55c**

5 lb. Freezer pkg. 2.69

SELECTED **JUMBO SHRIMP** lb. **79c**

DAIRY FAIR VALUES

MAYFAIR "NATURAL SLICED" **SWISS CHEESE** 8 oz. pkg. **41c**

MAYFAIR — American, Swiss & Pimento **CHEESE SLICES** 8 oz. pkg. **29c**

MAYFAIR CHEESE FOOD VITA PARTY SNACKS 2 lb. bot. 73c
 VITA LUNCH HERRING 8 oz. jar 35c
 Axelrod Cream Cheese — 6 oz. 27c In Plastic Containers

See How You Save on Food Fair's Fresher Fruits & Vegetables

Fresh, Green, Tender Western **Broccoli** 1 lb. bunch **23c**
 Sweet Eating — RED **Grapes** 2 lbs. **29c**
 Calif. Sunkist — NAVEL **Oranges** Large Eating doz. **35c**
 Best for Your Holiday Table **Pascal Celery** 1 lb. stalk **17c**

MAKE THAT ONE FOR THE ROAD
COFFEE
 Fyne-Taste Mild, Mellow Sweet Drinking lb. bag 95c
 Lady Fair Rich, Winery, Heavy Bodied lb. bag 97c
 Wonderful Vacuum Packed...
Food Fair lb. can **1.03**

SEE HOW YOU SAVE WITH
 FOOD FAIR'S FROZEN FOODS...

FYNE-FRESH — Fresh Frozen **Grape Juice** 2 6 oz. cans **29c**

DORANN FARMS — Fresh Frozen **Potato Puffs** 9 oz. pkg. **21c**

EXCELSIOR — SANDWICH **BEEF STEAKS**
 Fresh 2 6 oz. **69c**
 Frozen pkgs.

FAIRMONT — Whole **Strawberries** lb. pkg. **49c**
 FRESH FROZEN

E-Z POP
 POPCORN
 4 1/2 oz. 39c
 pkg.

PHILLIP'S
 SOUPS
 Chicken Noodle, Vegetable
 Beef or Chicken Rice
 10 1/2 oz. 15c
 can

HOFFMAN
 TAP-A-COLA
 4 12 oz. 25c
 cans
 Extra Dry or Non-Fattening

WESTON'S
 COOKIES
 Choc. Chip or Ass't-Creme
 29c
 pkg.

554 Washington Ave.,

We Reserve The Right To Limit Quantities — None Sold To Dealers.

All Prices Effective Tuesday, December 28th Thru Friday December 31st.



The Season's Finest
To the People of
Belleville

HEYER INDUSTRIES

47 Cortland Street
Belleville, N. J.



NEWARK LIGHT CO., Inc.

Wholesale Distributors
Electrical Supplies &
Equipment Lighting Fixtures
542 Washington Avenue
Belleville, N. J.
Tel. PL 9-3637 - 3638

The Best in 1955
For Our Friends
The People of
Belleville

COATING MATERIALS LABORATORIES

Belleville

Sincere New Years Greetings

To Our Many Friends

YERG, Inc.

Belleville, N. J.

Best of Health, Wealth and
Happiness in 1955

WORK-O-LITE COMPANY

Fluorescent Lighting Fixtures
Belleville



VAN DYKE & COMPANY

Belleville, N. J.

The Season's Greetings

From the Factory at the Park

THE ANDREW JERGENS COMPANY

Belleville

A FRIEND

May Peace and Happiness be Yours in 1955

A. J. CROWHURST & SONS

Belleville, N. J.

A FRIEND

Sincere New Years Greetings

WESTINGHOUSE ELECTRIC CORPORATION

Belleville

A Happy New Year to You

GREGO CONSTRUCTION COMPANY

Belleville, N. J.



To our neighbors The Citizens
of the Town of Belleville, Our
Best Wishes for 1955



To our employees and our friends
in Belleville a Happy and Peaceful
New Year.

EDSON TOOL & MANUFACTURING COMPANY



KEMTEK CORP.

85 Academy St. 206 Sylvan Ave.
Belleville Newark

To all of our good friends — we extend
a sincere wish for the fulfillment during
1955 of all the hopes that bring ease and
happiness of life.

SUSSEX PLASTICS

85 Academy St., Belleville

PAPER BOARD

SPECIALTIES CO., Inc.

69-71 William Street Belleville

We join Belleville Industrial Firms in wishing the
citizens of Belleville—

Health, Wealth and Happiness in 1955

NATIONAL YEAST CORPORATION

Frank J. Hale, President Belleville, N. J.

Holiday Greetings

FROM THE 300 FOLKS AT



WORLD'S LARGEST PRODUCER OF
GUMMED LABELS.



Ever Ready is a good place to build a better life. And
Belleville folks especially will find many new friends here.



EASTERN TOOL & MANUFACTURING COMPANY

Belleville, N. J.



Best Wishes to All for a

Happy New Year

Wishing You and Yours A
HAPPY NEW YEAR

MANNO DINING CAR CO.

22-24 Florence Ave. Belleville, N. J.
Ralph Manno
Vincent Giannotti

Season's Greetings

Eastern Moulding Co.

Belleville, N. J.

HAI NI YE



COPY W R

Best Wishes to All
For a Happy New Year

EASTWOOD NEALLEY CORPORATION

Belleville



VIKING TOOL & MACHINE CORPORATION

Belleville



WALLACE & TIERNAN CO., INC.

Belleville, N. J.

The Belleville Times-News

328 Washington Avenue

Belleville

A Friend

MANSOL CERAMICS COMPANY

13 Valley Street

Belleville, N. J.



Season's Greetings

RESISTOFLEX CORPORATION

Belleville, N. J.



HOFFMAN TRANSPORTATION COMPANY & HOFFMAN RIGGING & CRANE SERVICE

Belleville, N. J.



Greetings

From

The Mayor

And

Board Of

Commissioners

Our Best Wishes of the Season

C. CORINO & SONS TRUCKING AND CONTRACTING EXCAVATING 1-3 St. Mary's Place Plymouth 9-1812 Belleville, N. J.

A HAPPY AND PROSPEROUS NEW YEAR TO INDUSTRIES, CONTRACTORS AND CITIZENS

Forty Belleville industrial firms and contractors, some big, many little, join in wishing their neighbors the people of Belleville, the heartiest wishes of the season.

These firms mean a great deal to the Town of Belleville, furnishing employment to many of its citizens, and income to those of management, who reside in the town.

Furthermore, the assessments against their real estate and personal property account for half the total assessment of the town, a factor to be reckoned with in considering their desirability in this community. Few of them require town services in anywhere near the proportion of their contribution to the financing of these services through taxes paid.

It was recently proposed by a citizen that the Town Commissioners follow the example of the Cities of Trenton and Jersey City, and impose a tax on industrial gross receipts and on industrial payrolls. The members of the Board of Commissioners, so far, have not looked upon this suggestion with favor, because they realize this so called broadening of the tax base will do an injustice to a sizable proportion of these industrial firms. They know that industry already is carrying a larger tax burden, federal, state and local, than the home owner.

Belleville's industrial family needs encouragement, not further handicaps.

In Community affairs, the Industries play an ever increasing part. Leaders in almost every effort to improve the town, and to support its existing organizations and agencies, are drawn from the ranks of industrial management.

Belleville's contribution to the arming of our country for two wars was tremendous, and many of its factories, from the largest to the smallest, are now engaged in producing items for use by the armed services.

For these reasons and more, the people of Belleville in turn extend their Greetings of the New Year, to their good neighbors, the Industrial plants and Contractors of the town.

A FRIEND

New Year's Greetings to Our Friends

and to our Neighbors

LLOYD ENGINEERING COMPANY

Belleville

Our Sincere Wishes For

A Happy New Year

COSGROVE WIRE CLOTH CO., Inc.

Belleville, N. J.

A FRIEND



The Best of Health And
Happiness to You and Yours
in The New Year

E. J. LITTIG WOODWORKERS

Belleville



Best Wishes for A
Happy and Prosperous
New Year

BART MESSING CORPORATION

Belleville



Season's Greetings

TORRELL CONSTRUCTING CO.

Meadow Stone Fronts
Roofing — Siding — Garages
715 Washington Avenue
Belleville
PL 9-6300



A Healthy and Happy
New Year

GLAESER-STEERS CORPORATION

2 Main Street

Belleville, N. J.

The Season's Heartiest
Wishes From

RIEFOLLO CONSTRUCTION CO.

Belleville, N. J.

May the New Year Be A Prosperous
and Happy One for Belleville and its Citizens

H. V. HARDMAN CO., Inc.

Belleville, N. J.

THE BELLEVILLE TIMES-NEWS

Published every Thursday by The Belleville News Corporation, Belleville, N. J.
Telephone PL 3-2840
RALPH E. HEINZEN, EDITOR AND PUBLISHER
Joseph J. Hatanaka, News Editor
Mrs. Regina Spradger, Social Editor

The Summing Up

Here it is again. Almost before we've turned around, it seems January 1st is knocking at the door, fresh and eager to push the old year out.

Looking back, it's been a year of action in Belleville, replete with indictments, elections, charges and counter-charges. It's been a year of change.

1954 saw the establishment of a new market here; occupancy of new quarters by Prudential; record issuance of building permits and the heralded end of rent control. In the 1955 residents can look for the first

school board candidate election; a building program by the board; start of work on the town's first outdoor public swimming pool; the reclaiming of river land for park purposes; renovation of town buildings; and the start of construction of the Clara Maass Hospital on the Newark-Belleville border, and the occupancy of new quarters by De Witt Savings and Loan.

Residents can look forward to an ambitious year.

From this desk, in '54, apologies to any whose names were spelled wrong, who were misinterpreted, whose stories were left out of the paper or whose pictures weren't used.

If stories offended anyone, it wasn't out of malice. If stories helped anyone, it's all for the better.

Wipe the slate clean! Here's for a happy and prosperous New Year to the residents of Belleville from the staff of the Times-News.

J. J. H.

Letters to the Editor

Editor, Belleville Times-News:

County government being the oldest and unfortunately the least known of administrative functions directly affecting our daily existence, it often proves opportunities for digression from established accepted practices because of the apathetic disinterest shown by the citizenry in becoming acquainted with its workings.

We of Essex have for many years enjoyed good county government which has served as an exemplary model which other counties have endeavored to emulate and copy. The Essex County Clean Government Organization, especially under the able leadership of the Hon. A. T. Vandenberg, who prior to his resigning to become Chief Justice of the New Jersey Supreme Court where he brought the same unexcelled code of ethics to the court structure of our State, played no small part in shaping a policy pattern predicted upon

competency, integrity and the designation of high typed personnel to serve in the Freeholder and County Superior capacities, thus, assuring efficient, honest and capable administration of our County's affairs.

With the advent of the new year, for the first time in two decades, the solid control of the government of Essex County will pass from the capable hands of the Republican party. The result of the past general election, which witnessed the continued decline of GOP strength and an accompanying resurgence of potency and revitalization in Democratic ranks in the county, poses a serious threat to continued control of the State reigns of government by the Republican organization which already has lost control of the Executive branch of the state government.

It becomes the urgent responsibility of the GOP party leadership to reassess the myriad fac-

tors responsible for the large scale defections from their ranks and alter some of their unbecoming and immature attitudes of aloofness to the reasonable concerns of the general public, taking cognizance of the influencing strength of labor which has been alienated.

The impression that the Republican party represents the interests of entrenched wealth and special interest has militated against its success and widened the breach between the working classes and those candidates who ran under the Republican Aegis. Little regard is shown for individual experience or competency in view of the broad generalized revolt against the party.

Certainly some reasonable attitude to improve this situation should be attempted, which while not compromising the commendable ethical ideals and principles of the Republican party, especially in Essex, would tend to offset the serious inroads being made by the Democratic opposition.

Those who desire good, effi-

cient and honest government administration, such as we have had in Essex County, deplore the need of sacrificing the many years of experience of competent men such as County Supervisor Walter Gray. It is disheartening to realize that the general aversion of the masses of the people to the "sit-stocking" complexion of the GOP occasions the political immolation of such qualified public servants.

It is high time we Republicans "get on the ball", come down to earth and once again become the party of the people, establishing the fact that we serve all classes not only, as so often implied, the "blue-bloods". A revitalized, rejuvenated Republican party must depend upon the recapturing of the independent voter who is sensible to the reason of party policies which are amenable to his welfare and the mass concern of his contemporaries.

James R. Golden
62 Tappan Avenue

Editor, Belleville Times-News:

For the past several months I have been writing letters to the paper emphasizing the grave necessity of a police precinct in the Silver Lake area of Belleville. These letters were directed to Commissioner Sullivan. I feel that a review of what has taken place is necessary at this time.

In the Belleville Times-News issue of October 22, Commissioner Sullivan stated, "I am now in the process of organizing a Citizens Advisory Committee on traffic representing every section of the town including the Silver Lake district and together we will continue to meet and eliminate those traffic problems which we have not yet been able to weed out."

This committee of which the commissioner speaks must have been one of his "fantasies", for here we are nearing the end of December and his "myth" has not materialized.

Belleville Times-News, October 29: "In the event that your Citizens Advisory Committee on traffic materializes, I, Thomas B. Sciarillo, would like to state for public record that I will be most happy to serve."

The Commissioner did not communicate to me his desire for

any services. His reason is, in my opinion, that he has no use for the people in Silver Lake to ask an active interest in any of his "fantasies" and "myths."

The Commissioner stated in the last campaign that, "I'm elected I promise you people of Silver Lake and Soló better lighting for your streets and more police of foot patrol."

Has the Commissioner forgotten or does he believe that the end justifies the means?

Belleville Times-News, December 1: I asked the Commissioner to answer the following:

1) Is it not a fact that at the present time we have a policeman only at the school crossing during the day for a few hours?

2) That only one patrol car is assigned for Silver Lake, Soló, Belleville Park section to Jorammon Street to Union Avenue?

3) That you have six men in your office, working in the capacity of clerks?

4) That you have six men from the detective department in your office who do nothing more than warm a chair and that they also work as clerks?

5) That you have one policeman doing nothing more than making bullets or the pistol range?

Why has the Commissioner refused to answer these questions? The Commissioner has not answered for the simple reason that

all I have stated is the truth and he cannot give a very satisfactory answer. He is interested primarily in being elected, nothing more. He promises things which he forgets, "before the speech is written."

Commissioner Sullivan probably has another of his "fantasies" in being under the impression that the "taxpayers of Belleville" should consider it a privilege in paying their taxes "not for protection" but for the salaries of the clerks.

The Commissioner must mend his ways or "reign" which is, by far, the most sensible and constructive thing he can do for the people of Belleville and for himself and again become a just man instead of giving way to all these objectionable and unethical practices as are now being done by certain members of the police force whose salaries are being paid through taxes, primarily for "protection" and not for position as "clerks."

I conclude with the words of

EAST NUTLEY GARAGE

C. A. PANELLI, Prop.
Body and Fender Repainting
Expert Auto Inspecting
Phone: NU 5-2-0008
85 Washington Ave., Nutley, N. J.

Abraham Lincoln, which Commissioner Sullivan should heed: "You can fool some of the people all of the time; all of the people some of the time but not all of the people all of the time."

Thomas B. Sciarillo
65 Lake Street

OUR CLASSIFIED SECTION

BRINGS QUICK RESULTS

The safety of your savings
at DeWitt
is GUARANTEED...
BY U.S. GOVERNMENT INSTRUMENTALITY

YOU'LL LIKE OUR FRIENDLY SERVICE.

START AN INSURED ACCOUNT NOW, \$1 OR MORE.

DeWitt SAVINGS
AND LOAN ASSOCIATION

280 Washington Avenue, Belleville
Plymouth 9-3264
Daily, 9 to 4; ALSO MONDAY EYES, 6:30 to 8
Regularly SAVINGS INSURED TO \$10,000
Savings Accounts • Mortgage Loans • G.I. Home Loans
Home Improvement Loans • Traveler's Cheques • Money Orders

A HAPPY NEW YEAR TO ALL
THE MARGARET SHEEHAN
SCHOOL OF DANCING

127 New Street Belleville, N. J.

PL 9-2638

Classes In All Types Of Stage Dancing
REGISTER NOW

PL 9-1497 or WA 3-5621 EYES EXAMINED

Dr. M. Roachvarg
OPTOMETRIST

Mon. & Fri. 9:30-8
Tues., Thurs. & Sat. 9:30-6
And by Appointment
Closed Wednesday
132 Washington Avenue
Belleville

BELLWOOD BEAUTY SHOP

Ethel Wells, Prop.
575 Belleville Avenue PL 9-0383

Featuring
All Modern Methods of
Hair Dressing
Telephone for Appointment

NEW YEAR GREETINGS
FROM
MAUREEN FOGARTY
SCHOOL OF THE DANCE

Begin the New Year by enrolling now as new classes are being formed.

Classes for boys and girls of all ages in
TAP - TOE - BALLET - AEROBATIC - SPANISH
MUSICAL COMEDY - TWIRLING
and BALLROOM CLASSES.

Special classes for boys and girls 2½ to 5 years of age.

Attention: Teen Ageds and Adults - Classes in All
Types of Ball Room Dancing - Specializing In The
MAMBO

Enroll at the studio, located at
58 Lighth Street, Belleville
(Near Franklin Ave. & Jorammon St.) PL 9-3055

Happy
New Year
'55

TO ALL OUR FRIENDS AND PATRONS

Our Holiday Stollen And Decorated
New Years Cakes Are A Special Treat

Mr. and Mrs. E. Goeckler

QUALITY BAKERY

382 Washington Ave. Belleville, N. J.
(Corner of Jorammon St.)

PL 9-1673

JOHN G. YOUNG

Plumbing - Heating - Oil & Gas Burners
Kitchens Remodeled, Custom Built Cabinets
Leader and Gutter Work
Furnaces Vacuum Cleaned

Use Our Budget Plan For Payment

14 NEW STREET PLYMOUTH 9-1476

BANK
OF
NUTLEY

2%
PER
ANNUUM

CURRENT INTEREST RATE
ON SAVINGS DEPOSITS

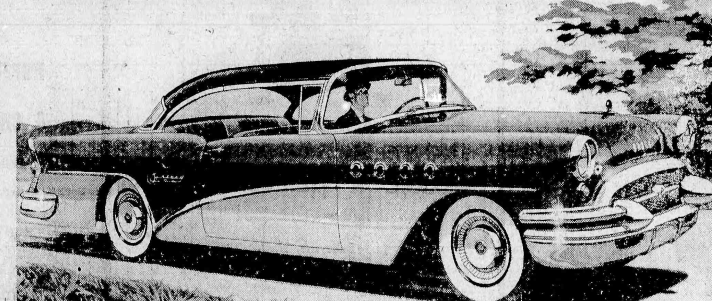
Savings deposited by Monday, January 10th will earn
interest from January 1st. Open your savings account
this week at the BANK OF NUTLEY. Three
convenient offices: Franklin Avenue and Chestnut
Street, Franklin Avenue near Vreeland and Centre
Street east of Franklin.

MEMBER FEDERAL DEPOSIT INSURANCE CORPORATION



New Year's resolution that pays off in thrills...

"I'm going to drive
that 1955 BUICK!"



WE'VE seen some high peaks of interest
in our new cars over the years - but
never anything like this.

Since the day we unveiled these glamorous
new Buicks, people have been coming in—not
only to see and study and sit in these great
cars—but, very definitely, to drive them.

They want, it seems, a firsthand taste of the
thrills that Buick engineers have conjured
up for this new year.

And who can blame them?

For the word's around that Buick has what
no other car has—a new kind of performance
from a new kind of transmission.

It's called Variable Pitch Dynaflo Drive.*

It uses the principle of the modern airplane's
variable pitch propeller. And it does in oil
what that aeronautical marvel does in air.

At one pitch of the blades inside the
Dynaflo unit, you get more fuel efficiency in
normal cruising and driving—which means
better gas mileage, pure and simple.

But push the gas pedal beyond the full
throttle position and you switch the pitch.
Instantly, you get electrifying response—a
sudden safety-surge of accelerating power to
get you quickly out of a tight spot—and with
the absolute smoothness that is constant in
Dynaflo Drive.

Maybe you, too, have made a mental resolu-
tion to drive a '55 Buick—but why wait?

We're ready, willing and eager to let you try
one—feel the spectacular new power that
gives life to this bounteous beauty—and see
for yourself that here is a performance thrill
too exciting to miss. Drop in on us this week,
won't you?

*Standard on Roadmaster, optional at extra cost on other Series.

Thrill of the year is Buick

MILTON BEALE STARS FOR BUICK—See the Buick-Sale Show Alternate Tuesday Evenings

—WHEN BETTER AUTOMOBILES ARE BUILT BUICK WILL BUILD THEM

BELLEVILLE-NUTLEY BUICK CO.
66-68 WASHINGTON AVE. NUTLEY NUTLEY 2-0500
OPEN WEEKDAYS 9 TO 9, SATURDAY 9 TO 5

Times Classified Advertisements

To Sell, Buy or Trade Telephone PLymouth 9-3200

Aluminum Windows

MINUTE TRIPLE-CHANEL COMBINATION WINDOWS, manufactured by GEERAL BRONZE CORPORATION—finest ever, compare and be convinced, no obligation. Telephone evenings or Saturday. Fred Klein, Nutley 2-2078.

Asphalt Driveways

ASPHALT DRIVEWAYS GABRIELE BROTHERS, asphalt driveways, parking lots, sidewalks. Power rolled and fully insured. All work guaranteed. 90 East Center St., Nutley 2-0470. Evenings, Gregory 1-5814. tf

Bedding

MATTRESSES, BOX SPRINGS. All famous makes; also renovated. Maple and juvenile furniture; pillows, quilts, cases, sheets, etc. Capitol Bedding, 222 Washington Ave., Belleville, PL 1-0174. tf

Carpenters & Builders

COMPLETE HOME MAINTENANCE; also alterations and repair jobs. Concrete mixer for hire. Louis Scalliro, 143 Passaic Avenue, Nutley 2-2078. Telephone Plymouth 9-3012.

ALTERATION, HOME REMODELING; will repair and modernize your home from basement to attic. Financing arranged. Call PL 2-2515 or 2-2516. Free estimates. Sam Cardillo. tf

CARPENTRY & MASONRY IN ALL ITS BRANCHES; porches, garages, additions. Plastering, brick stoops, concrete walks and walls. Estimates on request. George V. Oliver, 78 Nutley Ave., Nutley, N. J. 2-3332. tf

CARPENTER, MASON, CONTRACTOR. Experienced workman; reasonable prices. Call PL 2-2515 or 2-2516. Free estimates on your job. We also do roofing and wood gutters. Ben Robbins, 16 So. Willow St., PL 9-1316. tf

COMPLETE LINE OF MASON WORK, specializing in garages, sidewalks, brick stoops, patios, glass blocks, etc. All work guaranteed. D'Arc & DeVito, 237 Fairway Ave., PL 9-0952. tf

Child Care

LE BRETON NURSERY SCHOOL. Planned programs under trained supervision to develop well poised and confident children 2-6 yrs. Our transportation service covers Belleville, Nutley & Newark. Nutley 2-2853. tf

Decorators & Painters

PAINTING & DECORATING. George A. Snow, Johns-Manville ceilings installed. Free estimates given. PL 9-3697. tf

Electricians

COMPLETE ELECTRICAL SERVICE; commercial, industrial, residential. Outlets, lights, switches installed. Essex Electric Co., 9-1318 or PL 9-1360. T. F. F. tf

Excavating

VOCATURO, excavating, landscaping, topsoil, screened and unscreened, land clearing. A Vocaturo, 46 Borton Place, Nutley, Call Nutley 2-7479 or Plymouth 9-6640. tf

Floor Covering

RUGS - Wall to wall carpet, Linoleum tiles. Summer rugs. Meads-Miller Company, 143 Franklin Avenue, telephone Nutley 2-4305. 2-25-54 tf

For Rent

FURNISHED ROOM, for business gentleman, large closets; near transportation; high school section. PL 9-3407, 161 Holmes St. 11-5

FURNISHED BEDROOM or furnished study, refrigerator and television. Private bath, 28 bus pass door. Quiet convenient location. Call after 5 P.M. PL 9-3009. 12-28

LARGE COMFORTABLE ROOM, private home, convenient, residential neighborhood. PL 9-3916. 1-7

FURNISHED BEDROOM, comfortable for business man. Can enjoy use of house television; 1 block from Newark or New York buses. PL 9-0612. 1/14

For Sale

CORONA PORTABLE typewriter, No. Four, with case \$25; also Underwood standard office machine, \$50. Phone Nutley 2-4663, evenings or Saturday. 12-28

MISCELLANEOUS. Tappin Gas range, very good condition. Small Monitor 6 elec. washer. 737 Broadway rug. PL 9-9109. 12-28

NEW CUSTOM BUILT all aluminum boy's "jeep", lights and horn. Very sturdy toy for boy to 7. Wood lath ball bearing sunshade with motor. Some 4. H.P. used motors, good condition. Reasonable. 807 Kearny Ave., Kearny, Kearny 3-4751. 12-28

PARAKEETS, Closed bonded and trained, for talking or training; young and healthy; \$3.95 each. Also seed, supplies, cages. Crest Aerie, PL 9-2424. 1-7

4 BURNER GAS STOVE, apt. size, like new. PL 9-3607.

KENMORE WRINGER WASHER, good condition, \$15. Call PL 9-8187.

School Happenings

AUDIO-VISUAL AIDS

A meeting of the Audio-Visual Aids Workshop was held in the school room of School One last week. Thomas Gryzka, principal of School nine and director of visual education, was guest speaker. Lesson on Indians given at the Atlantic City convention, using visual aids. He also discussed a demonstration of models in one of the classrooms in New York University, using a full covered board for the base of the exhibit.

PASSAIC AVENUE SCHOOL

The primary department of Passaic Avenue School presented its Christmas program in the school auditorium to members of the Parent-Teacher Association.

The program capped a month during which the children have worked on various seasonal activities such as the painting of classroom windows, the making of Christmas tree ornaments, the trimming of the big Christmas tree at the entrance of the school, and the making of Christmas cards, and gifts for the parents.

The program consisted of numbers by the school orchestra, under the direction of Pat Bivona of 8B; a play by 4A class; choral speaking, "A Visit from St. Nicholas" by third grade; songs by the 2A class; a short opera by the 2C class; a group of songs by the first grade and a dance and song group by the combined morning kindergarten classes.

TEXTILE PAINTING

Mrs. Marie Wall's fourth grade class began their Christmas planning early. They recently completed an art project, textile painting, which was begun in September.

In developing this project the children, under the direction of Mrs. Nora de Leuw, made stencils of their own designs which included fish, leaves, flowers, umbrellas, butterflies, and tea-pots.

When the stencils proved satisfactory, they were painted on unbleached muslin with textile paint. The children then made pretty little tea aprons for their mother's Christmas gifts.

The class proved to be an eager and efficient sewing circle. The boys and girls sewed a mighty fine seam.

The finished product was displayed in the class room.

SCHOOL ONE

Mrs. Mary Lally's third grade in School One presented a play, "Who Brings Your Gifts?" The following children participated: Herbert Adelman, Iren Rii, Marianne Milano, Wilma Joyce Chestnut, Stephen De Luca, William Thomas, Robert Bonkowski, Anita Rodriguez, Kenneth Edwards, Thomas Durrell, and Stanley Alexander.

The kindergarten children and students from grades 1, 2, and 3 sang "Jolly Old St. Nicholas" and "Up on the House Top", and "Silent Night".

In the last issue of Shop Talk, the teachers periodical, Michael Roudinelli of the High School described Belleville's part in the nationwide Citizenship Education Project.

The project materials, which include references as well as information for the teacher, are in the high school library. A part of each social studies meeting is used for a review of the material and possible projects.

CHRISTMAS GLEE CLUB

A Christmas glee club program presented at the Parent-Teacher meeting in the auditorium of School Five. A group of seventy-five sang special Christmas songs. The eighth grade students sang, "The Birth of a King" with a solo by Diane Owens, and also "O Holy Night" with a solo by Diane Vanderbilt.

CHRISTMAS PROGRAM

The Christmas program of School One consisted of chorus singing led by Miss Jean Winters. Their selections included: "Christmas Spring," a Cantata song; "To Bethlehem," a Cantata song; "The Three Kings," by Peter Cornelius; "Carol of the Bells," Ukrainian Christmas Carol; "Twelve Days of Christmas," Old English.

The Twelve Days was dramatized by children from the fourth grade.

The eighth grade presented a play, "Cards for the Widows." Silhouettes of various holiday songs were shown while the assembly sang.

Members of the All School Orchestra played Christmas selections.

CHRISTMAS AT BHS

The Christmas program at the high school was a very successful one. The program was presented in the high school auditorium.

Wanted To Buy

ATTENTION: We pay 40¢ per 100 lbs. for newspapers, magazines delivered to our yard. We also buy rugs, scrap metal, iron, batteries. We also pick up J. Resciniti 42-44 Clinton St., Belleville, N. J. PL 9-4408. tf

Work Wanted

ODD JOBS DONE, rubbish and dirt removed; cellars and yards cleaned. Dump truck to hire. Market 2-2521 6 a.m. to 10:30 p.m. tf

FOR YOUR HOLIDAY CAKES, also birthday, wedding or anniversary. Dump truck to hire. Market 2-2521 6 a.m. to 10:30 p.m. tf

RELIABLE WOMAN would like to do baby sitting or care for semi-invalid. PL 9-6868.

High School was composed almost entirely of sacred music. The vocal part of the program featured the school choir singing "Soudous," "Behold Thy Star" and the traditional Hallelujah Chorus by Handel.

Community singing of Christmas carols was another attraction of the concert. Selections by the Baker's Dozen included: "The Night Before Christmas," arranged by Fred Waring; "In David's Town," "Winter Wonderland," and "The Christmas Song." The freshmen chorus which has just been organized sang two French carols, accompanied by Kathleen Botsford.

Instrumental music was provided by the orchestra, which featured a medley of familiar Christmas songs.

SCHOOL FOUR

The special classes at School Four made presents for their parents which they exhibited for the PTA Christmas meeting.

The particularly interesting were the hand painted tiles. Each one was different and reflected a hobby of the child or parent. Woven baskets, molded ceramic pints, Keene cement ash trays and glittered cards which show candles, bells or trees completed the exhibit. Pine cones which the pupils gathered and painted added a bright seasonal touch.

SPEECH PROGRAM

The speech and drama section of the Language Arts Department at the High School presented its second assembly program of the season.

The program was put on by Drama II classes, an all-girl class, which presented a variety show of a one-act play, a reading, and scenes from longer plays. The production was well received and the acting was excellent.

DAIRY VISIT

Miss Virginia Stackfleth's third grade at Passaic Avenue School visited the Alderney Dairy in Newark.

A chemist guided the class through the dairy explaining how the milk comes to Newark, how it is pasteurized and bottled. He showed them some of the other dairy products. The class was treated to French Ice Cream.

Helen S. Watson

Helen Sandford Watson, of West Milford, formerly of Belleville, died November 24. She was the wife of the late Thomas M. Watson Jr.

Service and interment was in the family plot, Bloomfield Cemetery Friday.

SAVE BY MAIL

AT HAYES SAVINGS & LOAN and earn

3% dividend

SAVE BY JAN. 10TH Earn From The 1st

HAYES SAVINGS AND LOAN ASSOCIATION

Now - CAPITOL BELLEVILLE PL - 9-1097

A Stanley Warner Theatre

Matinee Daily Thru Fri. Dec. 31 at 1pm - evenings from 8:30 pm

Wed. & Thurs. Dec. 29-30 Walt Disney's True-Life Adventure

"THE VANISHING PRAIRIE"

Also John Derek - Joan Evans "THE OUTCAST"

Matinee Friday Dec. 31 A Junior Joyfest of Film Fun Free Hats - Horns - Novelties George Montgomery "PORT IT"

Also Johnny Weissmuller "SAVAGE MUTINY"

35¢ Admission for Children 35¢

New Years Eve, Fri. & Sat. Dec. 31 & 1

Elaine Stewart - John Derek "ADVENTURES OF HAJJI BABA"

Also Jan Sterling - Neville Brand "RETURN FROM THE SEA"

Sun. Mon. Tues. Jan. 2-3-4 Audrey Hepburn Humphrey Bogart "SABRINA"

Also Joel McCrea - Mari Blanchard "BLACK HORSE CANYON"

In '55, Our Resolution Is The Same As Always . . .

Save You More

Serve You Better!

ACME SUPER MARKETS

OPEN WED. & THURS. DEC. 29-30 UNTIL 9 P.M.

OPEN FRI. DEC. 31, UNTIL 6 P.M.

LANCASTER BRAND

Cooked, Shankless

(Shank or Butt Portion) lb.

Whole or Either Half lb.

HAMS 49¢ 63¢

All set for the world's greatest disappearing act! Shankless, more meat for your money!

Ferris Canned Hams 2-lb. Size \$3.85

Hormel Hams Canned 4-lb. Size \$4.95 6-lb. Size \$7.95

PORK LOINS

Rib Portion lb. 29¢

Loin Portion lb. 39¢

Whole or Either Half lb. 45¢

Center Cut Portion lb. 69¢

Rich in vitamin B, easy to digest! Serve pork and sauer kraut or apple sauce for a delightful treat!

Lancaster Brand "Oven-Ready"

TOM 18 lbs. up 43¢

HEN 4 to 14 lbs. 55¢

Carefully selected from the finest broad-breasted flocks.

DUCKS LANCASTER BRAND OVEN-READY 16 53¢

BACON LANCASTER BRAND SLICED 8-oz. pkg. 39¢

SHRIMP JUMBO 1 lb. 69¢

OYSTERS 2½-lb. box \$1.69

Select ½ Pint Carton 59¢

Illustration of a child holding a sign that says "1955"

APPLE SAUCE Ideal Fancy 2 16-oz. cans 27¢

A "must" with your ham or pork loin dinner! Our finest quality! Buy a supply at this low price!

SAUER KRAUT Ideal Fancy 2 27-oz. cans 25¢

V-8 COCKTAIL Tomato Juice Giant 4-oz. can 33¢

NABISCO CRACKERS Triangle, Wheat or Corn Thins, Your choice, package 25¢

PICKLE SPEARS Kosher Style 32-oz. Jar 25¢

PORK & BEANS Ideal Fancy 10 16-oz. cans \$1.00

FREE! Beverages with Purchase of 6 12-oz. cans 49¢

Imagine, nine cans for only forty-nine ¢! Ginger Ale, Cola, Grape, Root Beer. At All Acmes!

DAIRY

EXTRA SHARP CHEESE lb. 69¢

BAKERY

VIRGINIA LEE FRUIT

Stollen each 49¢

PLAIN OR MARBLE Pound Cake Family Size 59¢

COCONUT Macaroon Cups Pkg. of 6 36¢

FROSTED FOOD

BROCCOLI IDEAL 2 10-oz. pkgs. 35¢

SPARS

ALL Advertised Prices Effective Through Fri. Dec. 31.

335 WASHINGTON AVENUE, BELLEVILLE

JUICY FLORIDA

ORANGES Dozen 29¢

LARGE SEEDLESS

Grapefruit 4 for 29¢

California Pascal Celery Large Stalk 19¢

White Boiler Onions 3 lbs. 25¢

Sweet Potatoes FANCY YELLOW 3 lbs. 19¢

Your Thrifty A&P will Strive . . .

TO SAVE YOU MORE IN '55

What's New?

Lots of things . . . every day . . . at your A&P!
Among other things, we constantly try to find new ways to please you . . . so if you have any suggestions as to how we can improve our service to you, please pass them along to your friendly A&P Manager . . . he'll be glad to hear them.

And, as always, the folks at A&P wish you and yours the best of everything in the New Year. Happy 1955!

Customer Relations Department — A&P Food Stores — 420 Lexington Avenue, New York 17, N. Y.

Customers' Corner

Count on A&P in '55 to Save You More on FRESH FRUITS AND VEGETABLES

The tops in crops from A&P will save you more . . . deliciously!

Iceberg Lettuce Washed Spinach

Western 2 large heads 25¢
Regalo Brand 10 oz. cello. pkg. 17¢

Fresh Broccoli Western farms bunch 25¢
Cauliflower Texas farms head 35¢
Sweet Yellow Corn Florida farms 4 ears 25¢
Potatoes Maine or Long Island 10 lb. bag 41¢ 15 lb. bag 59¢
Salad Mix Regalo Brand 8 oz. cello bag 15¢
Cole Slaw Regalo Brand 8 oz. cello bag 12¢

Delicious Apples Small — Western 2 lbs. 29¢
Seedless Grapefruit White or Pink 5 lb. bag 35¢
Red Grapes California 2 lbs. 29¢
California Lemons Regalo Brand carton of 4 19¢
Seedless Limes Regalo Brand carton of 4 17¢
Tangerines Florida — large size 12 for 25¢

HOLIDAY CANDY AND NUT TREATS

Richardson Mints Plain or Jelly 3 1/2 oz. 9¢
Delson's Merri Mints 8 oz. 21¢
Jordan Almonds Banner brand 14 oz. 29¢
Peppermint Jolly Rolls Worthmore 14 oz. 29¢
Bassett's Liquorice All sorts 8 oz. 19¢
Planters Cocktail Peanuts 14 oz. 34¢
Salted Peanuts Aster brand 14 oz. 40¢

Shelled Almonds Blue Diamond brand 6 oz. pkg. 33¢
Shelled Cashews Aster brand — salted 6 oz. pkg. 27¢
Brazil Nuts Regalo brand — shelled, unsalted 6 oz. pkg. 39¢
Shelled Filberts Regalo brand — unsalted 6 oz. pkg. 33¢
Mixed Nuts Regalo brand — shelled, salted 6 oz. pkg. 41¢
Pecan Meats Regalo brand — unsalted 6 oz. pkg. 59¢
Walnut Meats Regalo brand — unsalted 6 oz. pkg. 43¢

FROZEN FOOD VALUES!

Hormel Ham Sticks 8 oz. 49¢
Cream of Shrimp Soup Grosse or Blackwell 10 1/2 oz. can 29¢
Morgan's Clam Chowder 12 oz. can 40¢
Green Peas Birds Eye or Libby's 10 oz. 29¢
Libby's Spinach Chopped or leaf 10 oz. 17¢
French Fried Potatoes Birds Eye or Libby's 7 oz. 33¢
Beef Sandwich Steaks Excelsior brand 8 oz. 39¢
Breaded Shrimp Cap'n John's 10 oz. 49¢
Shrimp Pealed and Deveined Cap'n John's 12 oz. 75¢

Nifty Frozen Waffles 2 5 oz. 25¢
Libby's Orange Juice Concentrated — frozen 3 6 oz. 43¢

For Real Enjoyment

MAKE THAT "ONE FOR THE ROAD"

A&P COFFEE!

For a fine finish to a festive evening . . . and for a fine start to a safe 1955 . . . make that "last one" A&P premium-quality Coffee. Fresh, flavorful . . . a fitting toast to a really Happy New Year!

EIGHT O'CLOCK COFFEE 1-LB. 95¢ 3-LB. \$2.79
RED HOT CIRCUS COFFEE 1-LB. 97¢ 3-LB. \$2.85
BOKAR COFFEE 1-LB. 99¢ 3-LB. \$2.91

ONLY REAL COFFEE TASTES LIKE COFFEE!

A & P's Newest SuperMarket

333 Franklin Ave. • Near Joralsmon St.

Plenty of Free Parking Space

Another nearby A&P Supermarket at 169 Washington Ave. • Opp. Town Hall

Ready-To-Cook

TURKEYS

All Top Grade . . . Young, Plump — READY-TO-COOK

Sizes 18 lbs. and Over lb. 43¢ Sizes 4 to 16 lbs. lb. 55¢

A&P's price for small size turkeys includes the small Beltsville variety



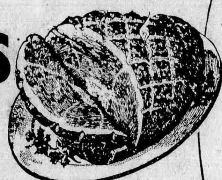
Fresh Hams Shank Half lb. 45¢ Butt Half lb. 55¢
Fresh Hams Whole lb. 49¢
Sirloin Steaks Juicy, flavorful lb. 85¢
Porterhouse Steaks Juicy, flavorful lb. 89¢
Top Round Steak or Roast lb. 89¢
Ground Beef Freshly ground lb. 35¢
Pork Loins 7 rib rib and lb. 29¢ loin and lb. 39¢
Pork Loin rib half, full cut lb. 39¢ loin half, full cut lb. 49¢
Pork Chunks Broiling and Frying — ready-to-cook lb. 41¢
Sizes under 3 lbs.

Leg of Lamb Reg. Style lb. 53¢
Legs of Lamb Over-ready lb. 59¢
Loin Lamb Chops Center cuts lb. 99¢
Smoked Ham Slices Domestic lb. 85¢
Canned Whole Hams 7 to 10 lbs. in can 1/2 lb. 30¢
Sliced Bacon Super-Right pkg. 59¢
Bologna or Meat Loaf Sliced lb. 49¢
Frankfurters Super-Right — skinned 1 lb. 49¢
Fancy Shrimp medium size lb. 59¢ large size lb. 85¢

"Super-Right" and Other Top-Grade Brands

SMOKED HAM

Shank Portion lb. 29¢ Butt Portion lb. 39¢ Whole or Either Half Full-Cut lb. 49¢



Ready-to-Eat Hams Shank Portion lb. 33¢ Butt Portion lb. 43¢ Whole or Either Half Full-Cut lb. 51¢

A&P's DAIRY VALUES!

Sliced Swiss Fancy Domestic Cheese lb. 49¢
Swiss Knight Gruyere Cheese Imported 6 oz. 39¢
Cream Cheese Philadelphia or Borden's 2 3 oz. 29¢
Liederkranz Cheese Borden's 4 oz. 39¢
Cocktail Spreads Borden's or Kraft's 2 5 oz. 47¢
Gottage Cheese Relish, Pimento, Pineapple Breakstone's 16 oz. 31¢
Baby Goudas Regular or California style 1/2 pint container each 43¢
Borden's Heavy Cream 1/2 pint container 59¢
Borden's Egg Nog 1/2 pint container 59¢

Come See, Come Save at A&P



New Year's Week Only!

A&P Super Markets and Self-Service Stores

OPEN TO 9 P. M.

Wednesday & Thursday (Friday Until 6 P. M.)

A&P's Many Low Prices In '55 Will Help You

SAVE MORE ON YOUR GROCERIES!

Dole Pineapple Juice 3 18 oz. cans 35¢ 2 46 oz. cans 53¢

Freestone Peaches A&P Brand Sliced or Halves Our Finest Quality 2 30 oz. cans 63¢

A&P Brand—Our Finest Quality
Cling Peaches Sliced or Halves 3 28 oz. cans 77¢
Corn Thins Nabisco 2 9 1/2 oz. 49¢
Libby's Tomato Juice 46 oz. 30¢
Shrimp Various brands medium 5 oz. 31¢ small 5 oz. 29¢
Rock Lobster Lucky Star 6 1/2 oz. 55¢
American Crabmeat Henia brand 5 1/2 oz. 57¢
Anchovies Various brands — imported Flat or Rolled 2 2 oz. 23¢
Norway Sardines Blue Peter brand Imported 3 3/4 oz. 15¢
Southern Star Bonito Solid pack 2 7 oz. 45¢
Minced Clams Blue Point brand 10 1/2 oz. 30¢
Heinz Sweet Mixed Pickles 7 1/2 oz. 29¢
Manhattan Dill Pickles Plain or Kosher style 4 oz. 33¢
Stuffed Olives Sultana — large or small 10 1/2 oz. 49¢

A&P Brand—Our Finest Quality
Grape Juice 12 oz. 29¢ 24 oz. 25¢
Hi-Ho Crackers Sunshine 16 oz. 32¢
Crispa Thin Pretzels 2 6 oz. 33¢
Grispo Mixed Cookies 10 oz. 23¢
Pfefferneusse Cookies Jane Parker 12 oz. 35¢
Armour's Vienna Sausage For snacks 4 oz. 37¢
Spam or Prem Luncheon meat 12 oz. 45¢
Liverwurst Spread Stahl-Meyer 2 3/4 oz. 29¢
Underwood's Deviled Ham 2 1/4 oz. 19¢
Adams Korn Kuris A tasty snack 4 oz. 25¢
E-Z Pop Corn Packed in its own popper 4 1/2 oz. 39¢
Pop Corn Jane Parker 19¢
Potato Chips Parker pkg. 16 oz. 69¢
Fritos 4 oz. 19¢ Cheetos 1/2 lb. 25¢

REFRESHING BEVERAGES!

Yukon Club Ginger Ale, Club Soda, Fruit Flavors — Plus deposit 2 29 oz. 27¢
Yukon Club Ginger Ale, Club Soda, Fruit Flavors Handi-pak — plus deposit 6 12 oz. 45¢
Ginger Ale White Rock, Hoffman's 2 large 45¢
Club Soda White Rock, Hoffman's 2 large 45¢
Coca-Cola Plus deposit 6 6 oz. 37¢
Nedick's Orange Drink Plus deposit 6 6 oz. 37¢
Sweet Apple Cider Mott's or 1/2 gal. 45¢
Hires Root Beer Plus deposit 12 oz. 37¢
Canada Dry Glamor No deposit 2 12 oz. 25¢

T FOR taste... T FOR thrift...

RICH AND FLAVORFUL

NECTAR

TEA BAGS

PKG. OF 48 45¢

PKG. OF 100 87¢

A&P Tea Bags

Fine Teas Need Not Be Expensive!

Jane Parker

FRUIT STOLLEN

With plenty of fruit each 49¢

Fruit Cake Jane Parker 1 1/2 lb. 1.29
Stuffing Bread Jane Parker 1 1/2 lb. 21¢
Apple Pie Especially made for stuffing poultry loaf 55¢
Dundee Cake Jane Parker — 8 inch size each 85¢
Spiced Chiffon Cake Large size each 33¢
Rye Bread Plain or with seeds 16 oz. loaf 18¢

PROVES Fine Foods Needn't Be Expensive

ANN PAGE

TOMATO SOUP

SPECIAL 6 10 1/2-Oz. Cans 55¢

Red-ripe tomatoes, fine table butter and deft seasoning . . . a deliciously satisfying soup, a ready-made sauce that's superb!

More Ann Page Values!

MUSTARD (REGULAR OR SALAD) . . . 9 Oz. Jar 9¢
FRENCH DRESSING . . . 8 Oz. Bottle 17¢
SYRUP . . . 12 Oz. Bottle 25¢
RED KIDNEY BEANS . . . 1-Lb. Can 10¢

AMERICA'S FOREMOST FOOD RETAILER . . . SINCE 1839

A&P Super Markets

THE GREAT ATLANTIC & PACIFIC TEA COMPANY

Prices effective thru Friday, Dec. 31st in Super Markets and Self-Service stores only.